

ANNUAL REPORT AND STATISTICS

CHILDREN SERVICES UNIT

SANDUSKY COUNTY DEPARTMENT OF JOB AND FAMILY SERVICES



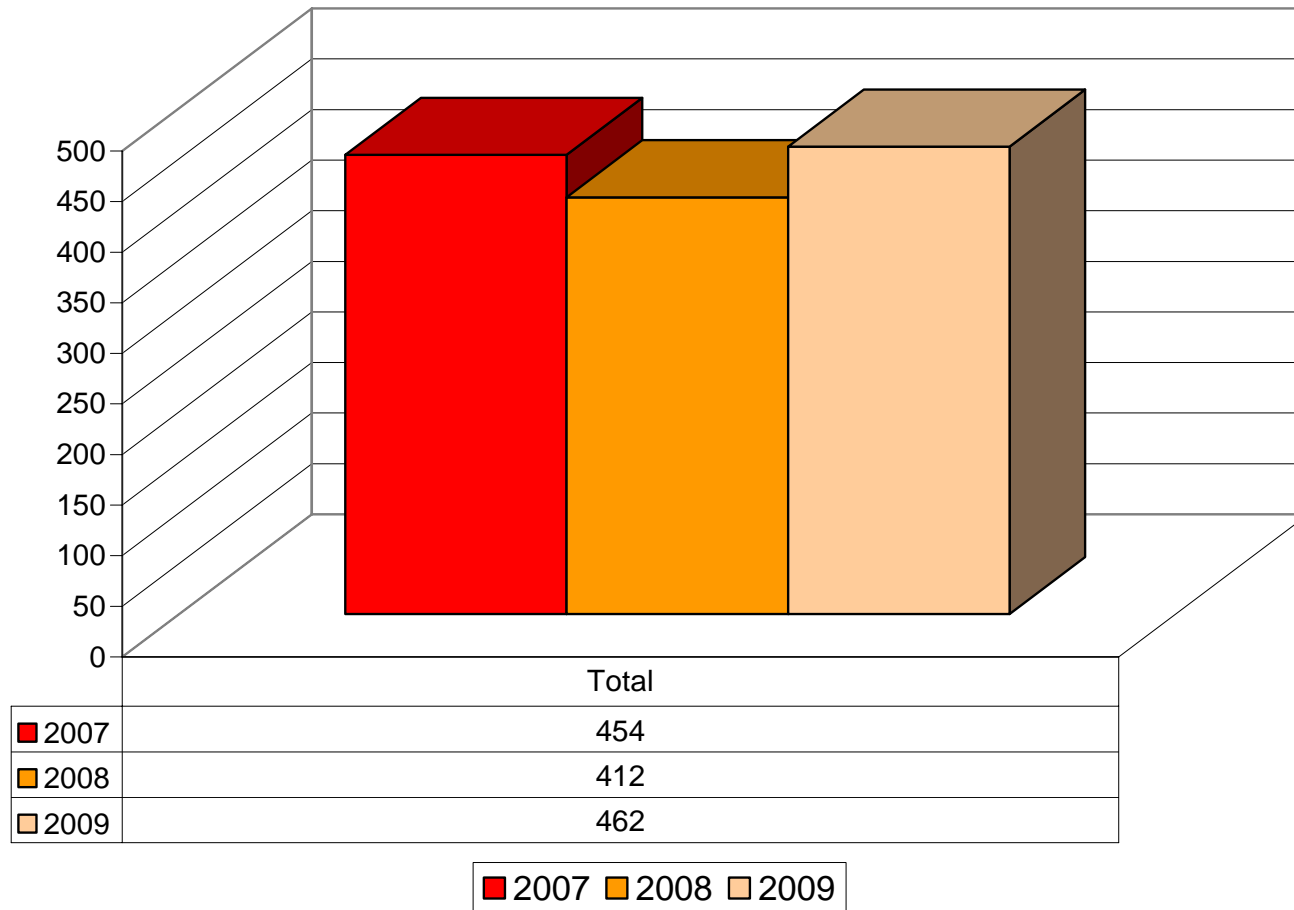
2007-2009

INVESTIGATIONS/ASSESSMENTS UNIT

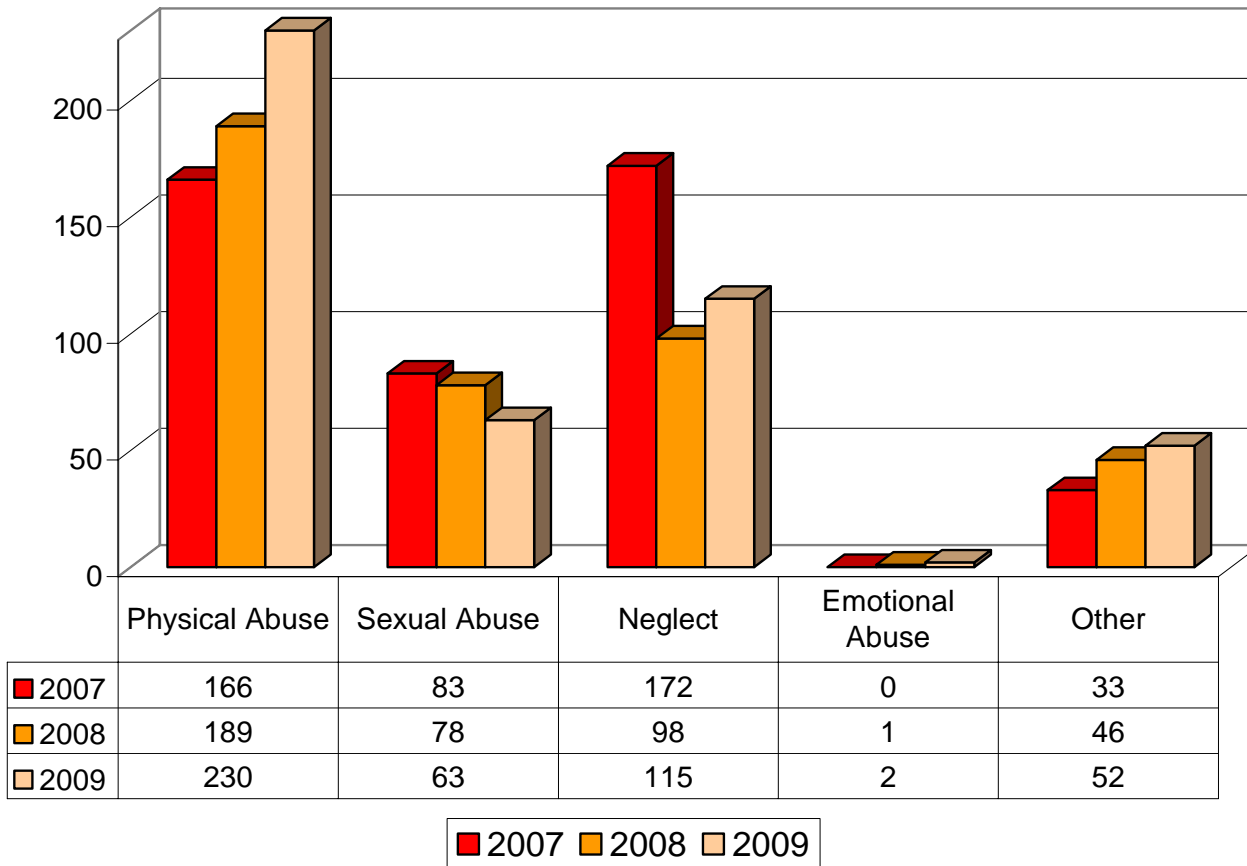
NUMBER OF INVESTIGATIONS/ASSESSMENTS
By Type of Allegation
(2007-2009)

	1/07	4/07	7/07	10/07	1/08	4/08	7/08	10/08	1/09	4/09	7/09	10/09
Physical Abuse	7	9	14	19	15	14	13	14	20	19	17	18
Sexual Abuse	4	7	8	7	6	9	11	6	7	6	5	4
Emotional Abuse	0	0	0	0	0	0	0	0	1	0	0	0
Neglect	25	16	10	9	5	4	11	11	11	6	11	13
Dependency	0	0	1	2	1	1	4	0	1	4	2	2
Courtesy Interviews	2	4	2	2	2	NA	NA	NA	NA	NA	NA	NA
FINS	NA	NA	NA	NA	NA	1	6	0	2	6	4	3
TOTAL	38	36	35	39	29	29	45	31	42	41	39	40

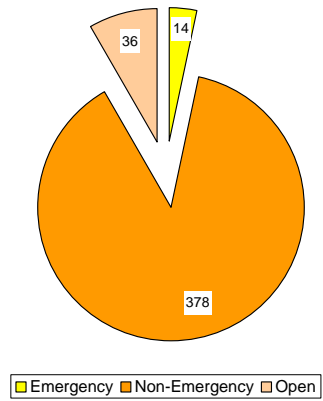
Total Investigations/Assessments



Total Investigations/Assessments By Allegation Type



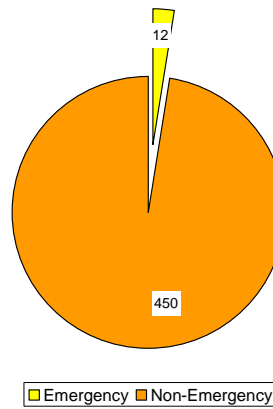
**Investigations/Assessments
By Priority Rating
2007**



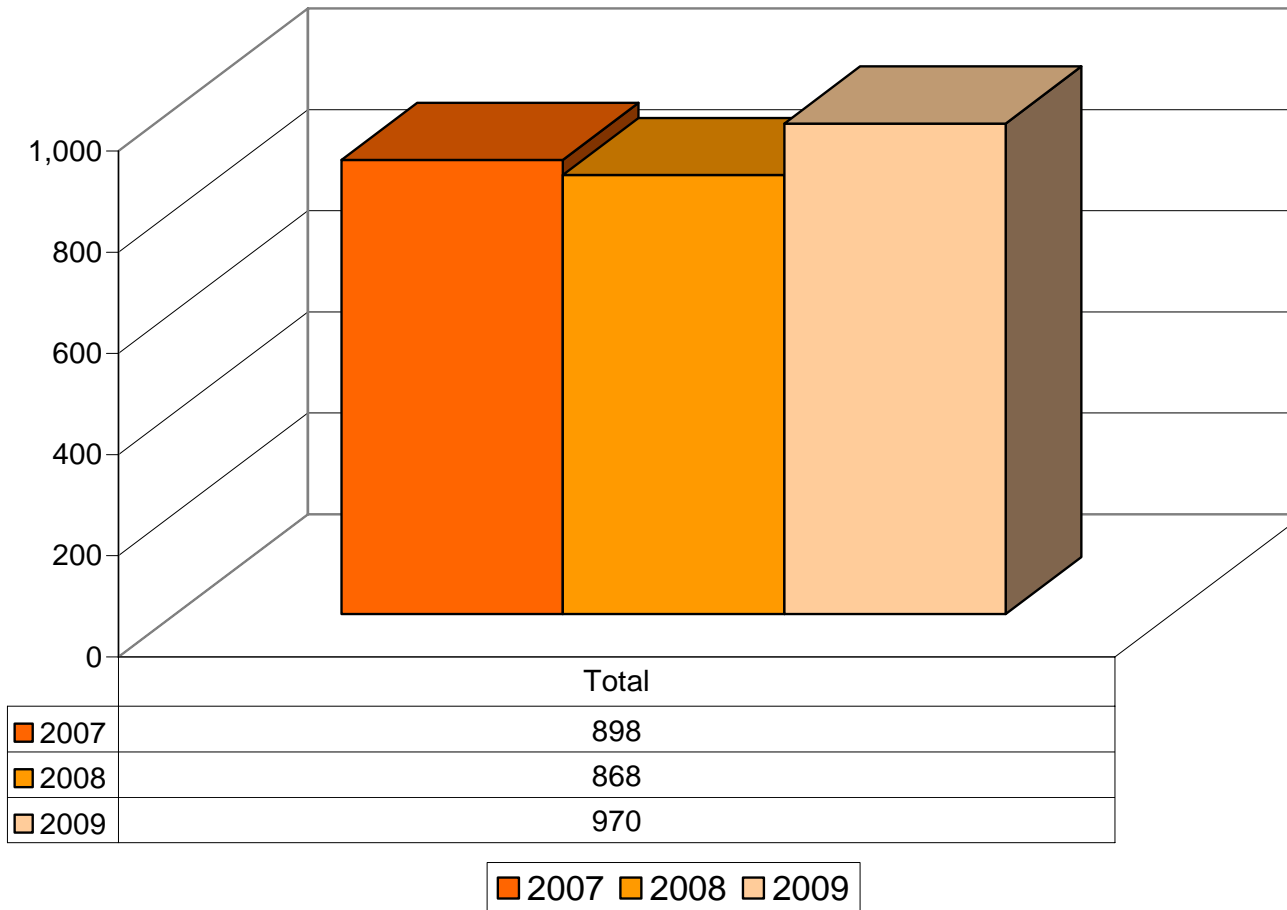
**Investigations/Assessments
By Priority Rating
2008**



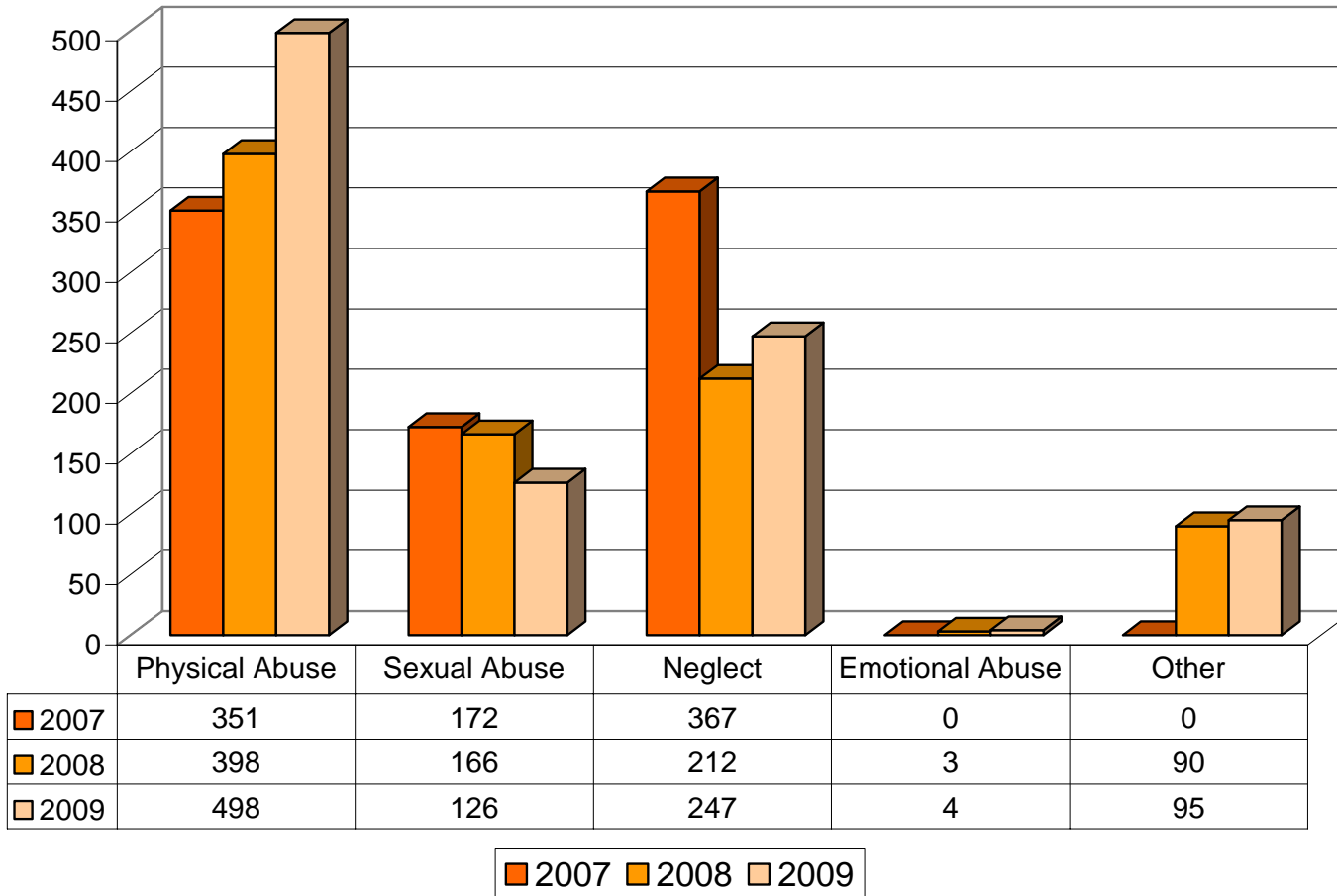
**Investigations/Assessments
By Priority Rating
2009**



Total Number of Children Involved In Investigations/Assessments



Total Number of Children Involved In Investigations/Assessments By Allegation Type

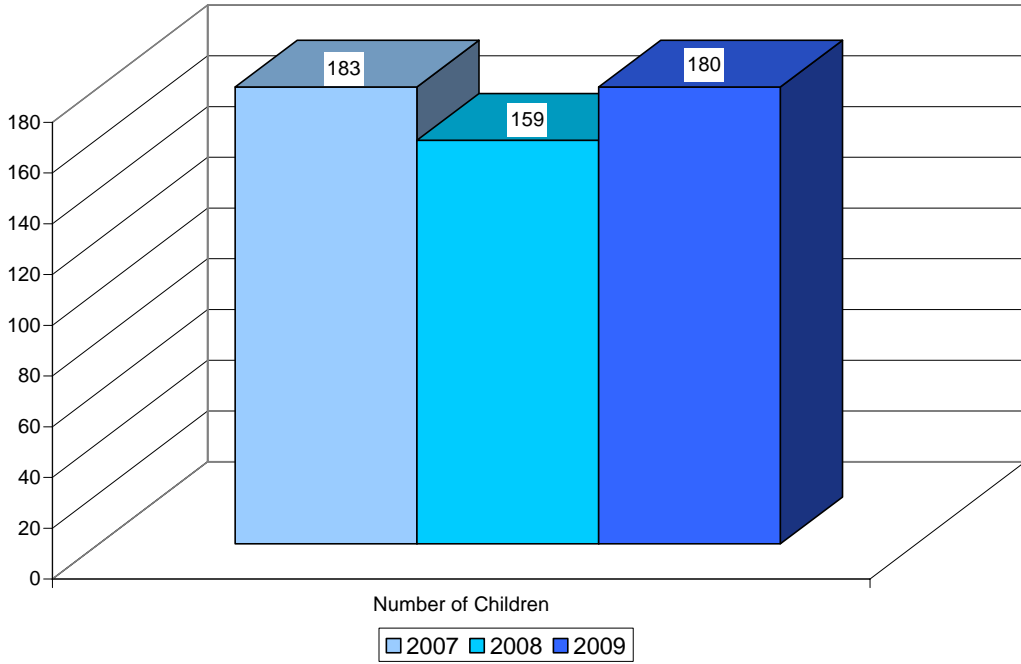


ONGOING UNIT

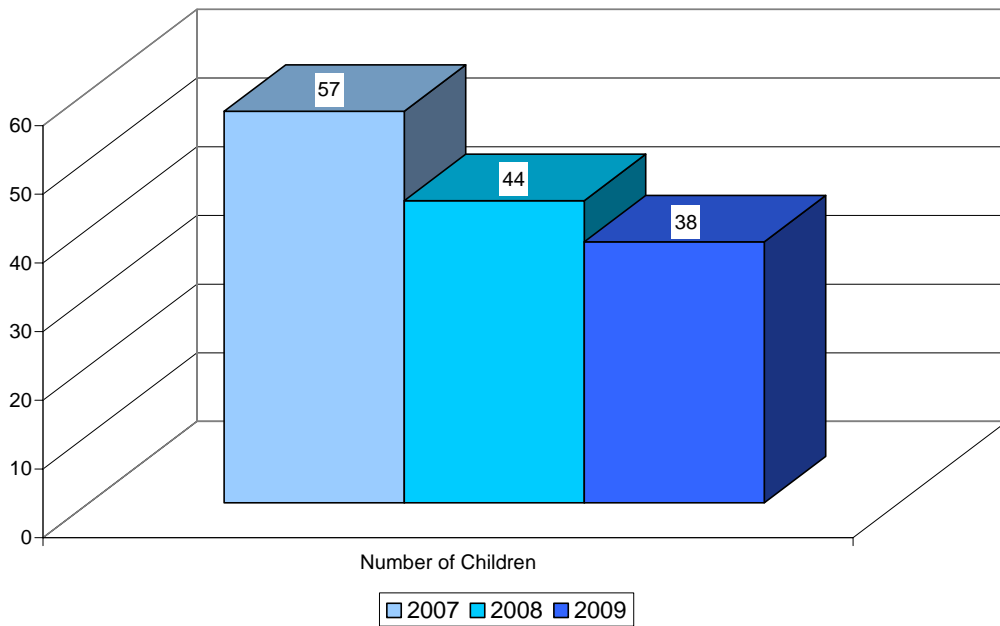
**TOTAL NUMBER OF OPEN ONGOING
CASES
(2007-2009)**

MONTH/YEAR	2007	2008	2009
JANUARY	57	47	61
FEBRUARY	57	41	62
MARCH	53	41	59
APRIL	49	44	60
MAY	47	45	57
JUNE	45	50	60
JULY	47	52	58
AUGUST	51	52	59
SEPTEMBER	53	54	58
OCTOBER	51	57	56
NOVEMBER	52	57	56
DECEMBER	49	58	53

Children With Ongoing Cases Protective Supervision and Custody



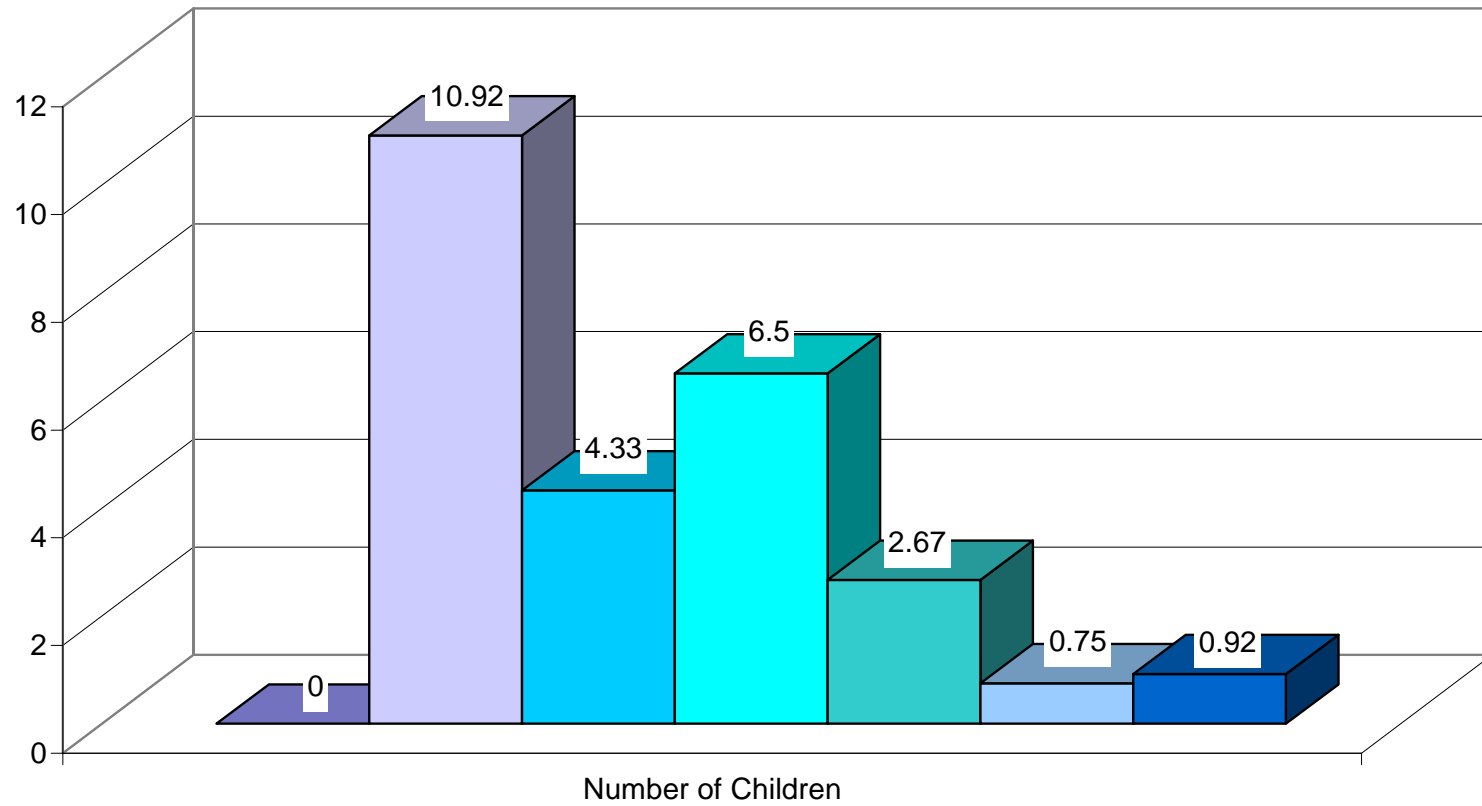
Children in Agency Custody



NUMBER OF OPEN CASES BY CASE TYPE (2007-2009)

	1/07	4/07	7/07	10/07	1/08	4/08	7/08	10/08	1/09	4/09	7/09	10/09
CUSTODY	23	22	22	21	17	17	22	22	24	24	23	24
COURT ORDERED PSUP	29	23	23	23	23	19	23	29	30	32	32	28
IN-HOME VOLUNTARY SERVICES	3	3	2	3	2	5	5	4	6	3	1	1
COURTESY SUPERVISION	2	7	0	4	5	3	2	2	1	1	2	3
TOTAL	57	49	47	51	47	44	52	57	61	60	58	56

Average Number of Children In Agency Custody By Placement Type 2009



Relative Home	Agency Foster Home	Other Agency Foster Home	Group Home
Residential Center	Adoptive Home	Other	

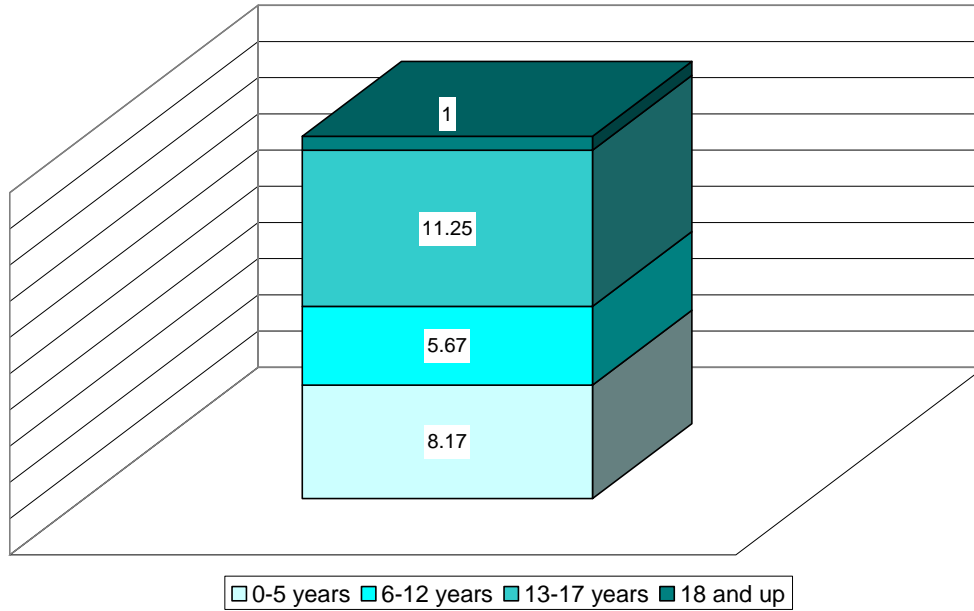
NUMBER OF CHILDREN WITH ONGOING CASES
Protective Supervision and Custody
(2007-2009)

MONTH/YEAR	2007	2008	2009
JANUARY	105	79	98
FEBRUARY	99	65	100
MARCH	92	64	99
APRIL	82	69	101
MAY	80	69	95
JUNE	80	75	108
JULY	75	81	103
AUGUST	88	85	105
SEPTEMBER	87	86	102
OCTOBER	87	91	98
NOVEMBER	89	93	97
DECEMBER	85	91	93
TOTAL UNDUPLICATED COUNT	183	159	180

**NUMBER OF CHILDREN IN AGENCY CUSTODY
(2007-2009)**

MONTH/YEAR	2007	2008	2009
JANUARY	33	22	27
FEBRUARY	32	22	28
MARCH	29	21	28
APRIL	29	21	26
MAY	28	21	25
JUNE	28	24	25
JULY	30	27	25
AUGUST	35	28	27
SEPTEMBER	29	28	26
OCTOBER	27	27	27
NOVEMBER	25	27	26
DECEMBER	24	27	23
TOTAL UNDUPLICATED COUNT	57	44	38

**Average Number of Children in Agency Custody
Per Month - By Age Group
2009**



NUMBER OF CHILDREN IN AGENCY CUSTODY
By Age Group
(2007-2009)

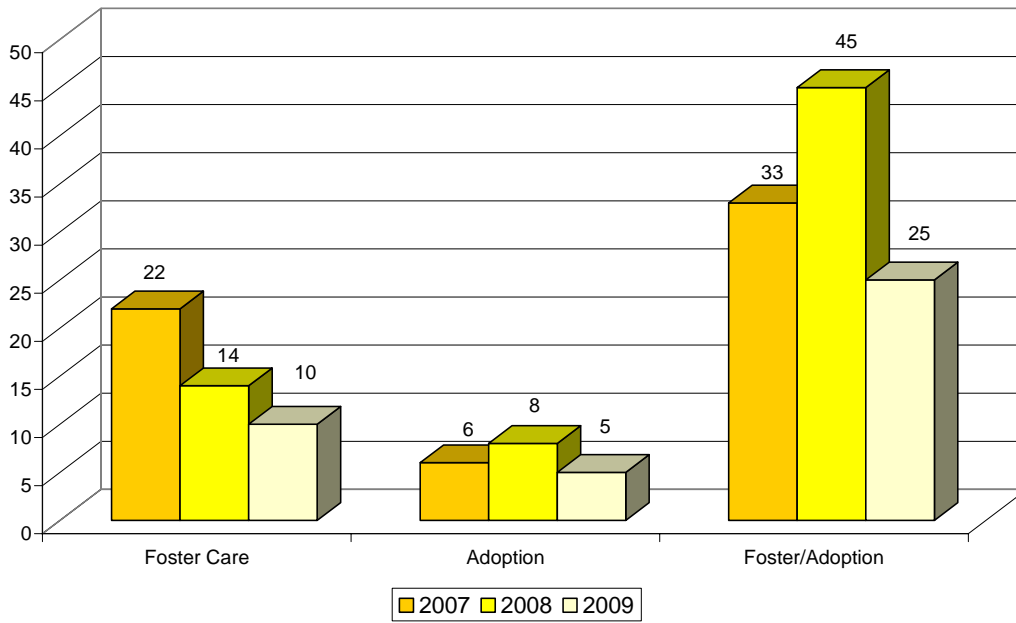
	1/07	4/07	7/07	10/07	1/08	4/08	7/08	10/08	1/09	4/09	7/09	10/09
0-5	9	8	11	13	8	6	7	7	8	7	8	10
6-12	10	7	8	5	5	6	7	6	5	5	6	6
13-17	11	11	10	8	8	7	12	14	13	13	10	10
18 and up	3	3	1	1	1	2	1	0	1	1	1	1

**NUMBER OF CHILDREN IN AGENCY CUSTODY
By Placement Type
(2007-2009)**

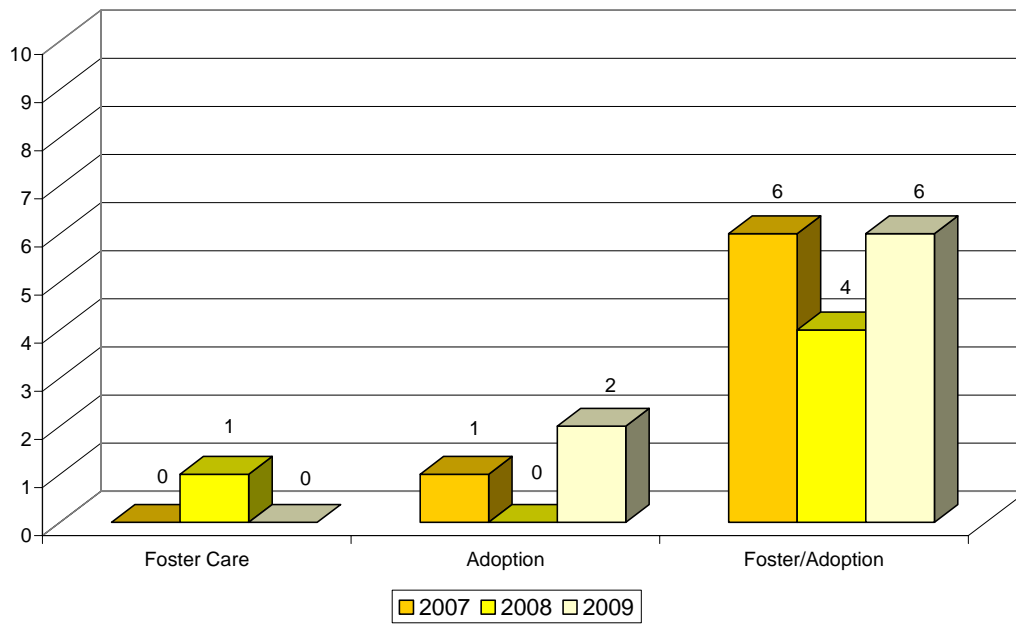
	1/07	4/07	7/07	10/07	1/08	4/08	7/08	10/08	1/09	4/09	7/09	10/09
Relative Home	0	0	0	1	0	0	0	0	0	0	0	0
Agency Foster Home	16	13	14	13	11	8	10	12	12	11	10	12
Other Agency Foster Home	3	4	3	1	1	3	4	3	4	4	4	5
Group Home	7	5	5	6	5	8	8	8	7	7	5	6
Residential Center	3	3	5	2	2	2	3	4	4	4	3	1
Detention Center	1	1	1	1	2	0	0	0	0	0	1	1
Hospital	0	1	0	0	0	0	0	0	0	0	0	0
Adoptive Home	1	1	1	0	0	0	1	0	0	0	2	1
AWOL	1	0	1	1	0	0	0	0	0	0	0	0
MRDD	1	1	0	0	0	0	0	0	0	0	0	0
Maternity Home	0	0	0	0	0	0	0	0	0	0	0	0
Other	0	0	0	2	1	0	1	0	0	0	0	1

**PLACEMENT AND PROGRAM
DEVELOPMENT
UNIT**

Foster Care/Adoptions Inquiries



Foster Care/Adoptions Licensed/Approved



**NUMBER OF NEW
FOSTER/ADOPTIVE HOMES
(2007-2009)**

	FOSTER HOMES						ADOPTIVE HOMES						FOSTER/ADOPT HOMES					
	Inquiries			Licensed			Inquiries			Approved			Inquiries			Lic/App		
	07	08	09	07	08	09	07	08	09	07	08	09	07	08	09	07	08	09
January	0	3	1	0	1	0	3	0	0	0	0	0	5	3	4	0	1	1
February	4	0	0	0	0	0	0	1	1	0	0	0	1	4	2	0	0	0
March	2	0	2	0	0	0	1	0	0	0	0	0	6	4	1	0	0	1
April	2	0	0	0	0	0	0	0	1	1	0	1	3	4	1	2	0	2
May	1	0	1	0	1	0	1	0	1	0	0	0	4	3	1	1	0	0
June	1	0	0	0	0	0	1	0	0	0	0	0	0	3	0	1	1	1
July	1	1	2	0	0	0	0	0	0	0	0	1	2	2	1	0	1	0
August	3	4	2	0	0	0	0	2	0	0	0	0	6	8	1	1	0	0
September	2	2	1	0	0	0	0	1	1	0	0	0	2	1	2	0	0	0
October	2	1	0	0	0	0	0	0	0	0	0	0	2	6	3	1	1	0
November	2	1	1	0	0	0	0	1	0	0	0	0	4	4	3	0	0	1
December	2	2	0	0	0	0	0	3	1	0	0	0	1	3	6	0	0	0
Total	22	14	10	0	1	0	6	8	5	1	0	2	33	45	25	6	4	6